

Steiner Technologies Works with Manufacturers to Increase Part Profitability by:

- Reducing part process time by 80% or more
- Eliminating Costly Secondary Operations
- Automating their Manufacturing Processes
- Enhancing Machinist/Operator Safety



Torque Bar Style

How it works

Utilizes an anti-rotation device to activate the blade during spindle reversal.

Advantages

Perfect for high production runs that require the maximum degree of reliability. Ideal for transfer lines and CNC machines



Bump Style

How it works

Cone grips the face of the work place to open and close the blade (must be a machined surface).

Advantages

Reliable performance on any machine tool; CNC or manual. Cost effective alternative to high production tooling.



Inertia Style

How it works

Utilizes the inertia generated during rapid spindle acceleration to open and close the blade.

Advantages

Ideal for modern CNC machines with rapid acceleration and deceleration. Cost effective alternative to high production tooling.



Coolant or Air Style

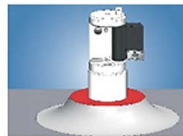
How it Works

High pressure coolant drives the blade open
Spring pressure closes the blade when the coolant is shut off

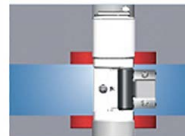
Advantages

Simple to set up and run. Perfect for high production runs ideal for machines with high pressure, filtered coolant systems

Cutter Profiles



Spot Face



Front & Back



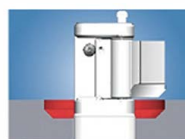
Special Form



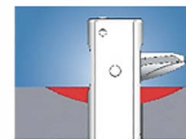
ID Chamfer



Counterbore



OD Chamfer



Spherical



Countersink



Pad or Ring Style

How it works

Pads grip the inside diameter of the pilot hole to open and close the blade.

Advantages

Ideal for hole sizes greater than 2.25 inches where front (& back) spot facing is required.



Bearing Guided

How it Works

A tapered pilot locates on a process bore supporting the tool a full 360 degrees. Adjustable insert cartridge. Available in Torque Bar and Cone activated configurations

Advantages

Excellent size control and repeatability
Capable of holding high precision tolerances of .0001" (.0025mm)



Extended Range

How it Works

A rack and pinion gear opens the blade like a jack knife. Available in Torque Bar and Coolant activated configurations

Advantages

Extended spot face to hole-size ratio (largest in the industry). Perfect for internal machining in differential gear cases